

ProCurve Secure Router 7000dl Series

The ProCurve Secure Router 7000dl series provides an affordable and scalable platform for SMB as well as medium and large enterprises to connect branch offices to their headquarter locations. The Secure Router 7000dl series offers a variety of WAN interface modules and supports wire-speed routing performance with integrated security and convergence capabilities to secure branch office connections edge to edge while simplifying the deployment, management, and support of your routers.



ProCurve Secure Router
7102dl (J8752A)



ProCurve Secure Router
7203dl (J8753A)

ProCurve Secure Router 7000dl Series

Features and benefits

Security

- **Stateful firewall:** includes an integrated stateful firewall and a Cyber Attack Defense Engine that stops common attacks to help ensure continuous availability of critical Internet-dependent applications; the firewall also supports NAT and port-forwarding operations
- **Access control lists (ACLs):** provide IP Layer 3 filtering based on source/destination IP address/subnet and source/destination TCP/UDP port number
- **IPSec VPN:** optional IPSec VPN module enables site-to-site and client sessions; tunneling protocols include IPSec and GRE; encryption methods include 3DES-CBC, DES-CBC, AES-CBC, 128-bit, 192-bit, and 256-bit; hash algorithms supported are SHA-1, MD5, and manual IPSec policies; supports the ability to route traffic between tunnels (hub and spoke VPNs)
- **Policy-based routing:** allows the enforcement of packet policies and resource allocation down to individual end systems and end users
- **Network address translation (NAT) support:** provides 1:1 or 1:many NAT port translation
- **Management security:** utilizes SSHv2, secure copy, and SSL to encrypt all HTTP traffic, allowing secure access to the browser-based management GUI in the router; supports AAA systems, including authentication methods that utilize RADIUS servers or local user database for operator and privileged mode passwords
- **Global password encryption:** provides a global command to allow encryption of all user passwords
- **RADIUS authentication:** user authentication is performed via RADIUS to prevent unauthorized management access
- **TACACS+ AAA support:** offers full authentication, authorization, and accounting (AAA) with TACACS+
- **802.1X supplicant:** supports 802.1X supplicant mode, where the router transmits and receives EAP requests from the authenticator to support

802.1X-enabled environments and prevent rogue networking equipment deployments

Ease of use

- **ProCurve AutoSynch capability:** automatic synchronization of the internal flash and compact flash memory to help ensure that the most recent configuration and image files are stored in both locations to facilitate remote deployment, manageability, and maintenance
- **ProCurve SafeMode capability:** allows easy recovery of configuration mishaps when modifying active configurations remotely
- **Industry-standard CLI:** utilizes a familiar command-line interface (CLI) to minimize training and certification costs
- **Link Layer Discovery Protocol (802.1ab):** supported by ProCurve Manager to enable real-time mapping of Ethernet nodes connected to the router ports
- **Compact flash port:** facilitates remote site installation by allowing system image and configuration file to boot from externally accessible compact flash (CF) drive; can be configured to support ProCurve AutoSynch technology to simultaneously update external CF and onboard flash with the system image and configuration file, helping to limit downtime and switchover in the event of failure
- **Dual flash images:** provide independent primary and secondary OS files for backup while upgrading
- **Firewall and VPN wizards:** the GUI provides a simplified format for configuring firewall policies and access control lists (ACLs), as well as setting up VPN tunnels; novice and expert users will find the GUI to be intuitive and easy to use
- **Central management:** supports SNMPv2; can be centrally managed to archive and update configuration and software image files

Convergence

- **VoIP support:** supports H.323 and SIP ALGs through a firewall

Quality of Service (QoS)

- **Layer 2/3/4 QoS mechanisms:** support IP Precedence and DiffServ priority tagging based on

ProCurve Secure Router 7000dl Series

IP address, IP Type of Service (ToS), L3 protocol, TCP/UDP port number, and source port

- **Scheduling mechanisms:** supports Weighted Fair Queuing (WFQ), FIFO, Low Latency Queuing (LLQ), and Priority Queuing (PQ)
- **Class-Based Weighted Fair Queuing (CBWFQ):** allows allocation of bandwidth to a particular class of traffic based on a percentage of total available bandwidth or maximum Kbps throughput
- **Traffic shaping and QoS support for Ethernet ports:** allow the ability to apply WFQ, LLQ, and CBWFQ mechanisms to Ethernet ports based on DiffServ Code Point settings
- **Policy and shaping:** supports Frame Relay Traffic Shaping (FRTS) and frame relay fragmentation (FRF.12) to help minimize insertion delay across low-speed WAN links

Resiliency and high availability

- **Equal-cost multi-path (ECMP) for BGP, OSPF, and static routes:** provides the ability to load-balance traffic across multiple WAN connections
- **Multilink capability:** MLFR and MLPPP enable multiple T1/E1 ports to be aggregated and dynamically load-balanced across Frame Relay or PPP links
- **Multi-homing BGP support:** supports redundant WAN connections to multiple service providers using BGP routing protocol
- **Optional redundant power supply:** provides uninterrupted power (provided by ProCurve 600 RPS/EPS)

Layer 2 switching

- **VLAN support and tagging:** support complete 802.1Q (4,096 VLAN IDs)

Layer 3 routing

- **IP routing protocols:** supports static routes, RIP, RIPv2, OSPF, and BGP4
- **Policy-based routing:** allows users to route based upon both source and destination address

Layer 3 services

- **IP multicast:** supports PIM SM, IGMPv2, and multicast stub routing
- **PIM Sparse mode:** routes IP multicast traffic using PIM Sparse mode (PIM SM)
- **DHCP support:** acts as a DHCP server, relay, or client

Supported WAN standards

- **WAN protocols:** provides support for PPP, Frame Relay, IPSec, HDLC, DDR, MLPPP, MLFR, PPPoA, and PPPoE
- **Dial-on-demand routing:** allows the ISDN and analog modem modules to route packets without primary line failure, allowing users to take advantage of the cost savings possible by only activating the dial link when routing traffic is required

Industry-leading warranty

- **Lifetime warranty:** for as long as you own the product, with next-business-day advance replacement (available in most countries)

Services

ProCurve Secure Router 7102dl

- 3-year, 4-hour onsite, 13x5 coverage for hardware (UA432E)

- 3-year, 4-hour onsite, 24x7 coverage for hardware (UA433E)

- 3-year, 4-hour onsite, 24x7 coverage for hardware, 24x7 software phone support (UA434E)

ProCurve Secure Router 7203dl

ProCurve Secure Router 7000dl Series

- 3-year, 4-hour onsite, 13x5 coverage for hardware (UA435E)
- 3-year, 4-hour onsite, 24x7 coverage for hardware (UA436E)
- 3-year, 4-hour onsite, 24x7 coverage for hardware, 24x7 software phone support (UA437E)

ProCurve Secure Router 7000dl Series

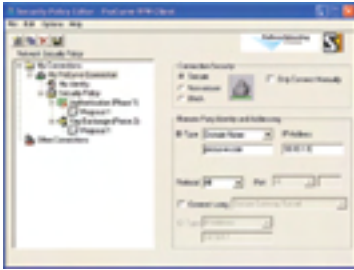


Specifications

	ProCurve Secure Router 7102dl (J8752A)	ProCurve Secure Router 7203dl (J8753A)
Ports		
	2 10/100 ports (IEEE 802.3 Type 10Base-T, IEEE 802.3u Type 100Base-TX) 2 dl module slots 1 Compact Flash port	2 10/100 ports (IEEE 802.3 Type 10Base-T, IEEE 802.3u Type 100Base-TX) 2 dl module slots 1 dl wide module slots 1 Compact Flash port
RPS option	Yes	Yes
VPN encryption module slot	500 Max VPN sessions 1 RS-232C DB-9 console port	1000 Max VPN sessions 1 RS-232C DB-9 console port
Physical characteristics		
Dimensions	11.52(d) x 17.42(w) x 1.73(h) in. (29.26 x 44.25 x 4.39 cm) (1U height)	11.52(d) x 17.42(w) x 1.73(h) in. (29.26 x 44.25 x 4.39 cm) (1U height)
Weight	10.26 lb. (4.62 kg)	10.95 lb. (4.93 kg)
Memory and processor		
Flash capacity	32 MB	32 MB
SDRAM	128 MB	256 MB
Mounting		
	Mounts in an EIA-standard 19 in. telco rack or equipment cabinet (hardware included); horizontal surface mounting only	Mounts in an EIA-standard 19 in. telco rack or equipment cabinet (hardware included); horizontal surface mounting only
Performance		
WAN throughput	150 kpps; up to 4xT1/E1 lines	210 kpps; up to 8xT1/E1 lines
Environment		
Operating temperature	32°F to 122°F (0°C to 50°C)	32°F to 122°F (0°C to 50°C)
Operating relative humidity	0% to 95% , non-condensing	0% to 95% , non-condensing
Non-operating/storage temperature	-4°F to 158°F (-20°C to 70°C)	-4°F to 158°F (-20°C to 70°C)
Non-operating/storage relative humidity	0% to 95%, non-condensing	0% to 95%, non-condensing
Electrical characteristics		
Voltage	100-127 VAC/200-240 VAC	100-127 VAC/200-240 VAC
Current	0.4 A/0.2 A	0.8 A/0.2 A
Power consumption	13 W	52 W
Frequency	50/60 Hz	50/60 Hz
Safety		
	CSA 22.2 No. 60950 3rd edition; CE Labeled; cUL Certified; EN 60950/IEC 60950, 3rd edition; UL 60950; UL Listed; AS/NZS60950; KN60950; GOST R MEK60950; TS60950	CSA 22.2 No. 60950 3rd edition; CE Labeled; cUL Certified; EN 60950/IEC 60950, 3rd edition; UL 60950; UL Listed; AS/NZS60950; KN60950; GOST R MEK60950; TS60950
Emissions		
	FCC Rules Part 15, Subpart B Class A; CISPR22/A2; EN55022/A2; ICES-003; VCCI V-3/2000.04; IEC/EN61000-3-2; IEC/EN61000-3-3; EN55024/A1; IEC61000:4-2, 4-3, 4-4, 4-5, 4-6, 4-8, 4-11; BSMI CNS 13438	FCC Rules Part 15, Subpart B Class A; CISPR22/A2; EN55022/A2; ICES-003; VCCI V-3/2000.04; IEC/EN61000-3-2; IEC/EN61000-3-3; EN55024/A1; IEC61000:4-2, 4-3, 4-4, 4-5, 4-6, 4-8, 4-11; BSMI CNS 13438
Telecom		
	TBR-1; TBR-2; TBR-3; TBR-12; TBR-13; TBR-21; ITU-T G.992.1	TBR-1; TBR-2; TBR-3; TBR-12; TBR-13; TBR-21; ITU-T G.992.1

ProCurve Secure Router 7000dl Series

Accessories



ProCurve VPN Client Unlimited User License (J8750A)

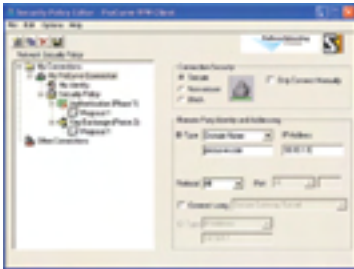
System requirements

Minimum Memory: 32 MB RAM
Recommended Memory: 64 MB RAM

Minimum Disk Space: 10 MB

Operating system

Microsoft Windows NT, Microsoft Windows 2000, Microsoft Windows XP, Microsoft Windows 95, Microsoft Windows 98



ProCurve VPN Client 100 User License (J8758A)

System requirements

Minimum Memory: 32 MB RAM
Recommended Memory: 64 MB RAM

Minimum Disk Space: 10 MB

Operating system

Microsoft Windows NT, Microsoft Windows 2000, Microsoft Windows XP, Microsoft Windows 95, Microsoft Windows 98

dl Modules

ProCurve Secure Router dl 2-port ISDN BRI S/T Module (J8457A)

2-port ISDN BRI S/T module. Includes 2 RJ45-RJ45 straight-through cables (3 m).

Connectivity

Connectors: RJ-45, 1 RJ-45 for optional backup module
Interface: 2 ISDN BRI S/T interfaces; each supports 2 B channels (128 kbps)

Physical characteristics

Dimensions: 4.4375 (d) x 3.20 (w) x 1.29 (h) in. (11.27 x 8.13 x 3.28 cm)

Weight: 0.22 lb. (0.1 kg)

Environment

Operating temperature: 32°F to 122°F (0°C to 50°C)
Operating relative humidity: 0% to 95%, non-condensing
Non-operating/Storage temperature: -40°F to 185°F (-40°C to 85°C)
Non-operating/Storage relative humidity: 0% to 95%, non-condensing

ProCurve Secure Router 7000dl Series

ProCurve Secure Router dl 2-port ISDN BRI U Module (J9010A)

2-port ISDN BRI U module. Includes 2 RJ11-RJ45 straight-through cables (3 m).

Connectivity

Connectors: RJ-45, 1 RJ-45 for optional backup module
Interface: 2 ISDN BRI U interfaces; each supports 2 B channels (128 kbps)

Physical characteristics

Dimensions: 4.4375 (d) x 3.20 (w) x 1.29 (h) in. (11.27 x 8.13 x 3.28 cm)

Weight: 0.21 lb. (0.1 kg)

Environment

Operating temperature: 32°F to 122°F (0°C to 50°C)
Operating relative humidity: 0% to 95%, non-condensing
Non-operating/Storage temperature: -40°F to 185°F (-40°C to 85°C)
Non-operating/Storage relative humidity: 0% to 95%, non-condensing



ProCurve Secure Router dl 1-port Serial Module (J8458A)

1-port serial dl module supporting up to 10 Mbps over V.35/X.21 DTE interfaces to an external CSU/DSU. Requires a V.35 or X.21 serial cable to connect to an external CSU/DSU. Serial interface operates in DTE mode only.

Connectivity

Connectors: (Serial) 26-pin interface, 1 RJ-45 for optional backup module
Rate: Up to 10 Mbps to an external CSU/DSU
Interface: V.35 or X.21 interface support

Physical characteristics

Dimensions: 4.65 (d) x 3.2 (w) x 1.3 (h) in. (11.81 x 8.13 x 3.3 cm)

Weight: 0.11 lb. (0.05 kg)

Environment

Operating temperature: 32°F to 122°F (0°C to 50°C)
Operating relative humidity: 0% to 95%, non-condensing
Non-operating/Storage temperature: -40°F to 185°F (-40°C to 85°C)
Non-operating/Storage relative humidity: 0% to 95%, non-condensing



ProCurve Secure Router dl 1-port ADSL2+ Annex A Module (J8459A)

1-port ADSL2+ Annex A dl Module supports ADSL/ADSL2/ADSL2+ over POTS lines

Connectivity

Connectors: (ADSL) RJ-11, 1 RJ-45 for optional backup module
Supported standards: ADSL, ADSL2, ADSL2+ for Annex A over POTS lines
Min/Max upstream rate:
ADSL: 32 Kbps to 800 Kbps
ADSL2: 32 Kbps to 800 Kbps
ADSL2+: 32 Kbps to 2 Mbps
Min/Max downstream rate:
ADSL: 224 Kbps to 8 Mbps
ADSL2: 224 Kbps to 12 Mbps
ADSL2+: 224 Kbps to 24 Mbps

Line Code: DMT

Physical characteristics

Dimensions: 4.65 (d) x 3.2 (w) x 1.3 (h) in. (11.81 x 8.13 x 3.3 cm)
Weight: 0.18 lb. (0.08 kg)

Environment

Operating temperature: 32°F to 122°F (0°C to 50°C)
Operating relative humidity: 0% to 95%, non-condensing
Non-operating/Storage temperature: -40°F to 185°F (-40°C to 85°C)
Non-operating/Storage relative humidity: 0% to 95%, non-condensing

Notes

ADSL2+ capability not available at first release, but can be updated through a future software release.

ProCurve Secure Router 7000dl Series



ProCurve Secure Router dl 1-port ADSL2+ Annex B Module (J8759A)

1-port ADSL2+ Annex B dl Module supports ADSL/ADSL2/ADSL2+ over ISDN lines

Connectivity

Connectors: (ADSL) RJ-11, 1 RJ-45 for optional backup module
Supported standards: ADSL, ADSL2, ADSL2+ for Annex B over ISDN lines
Min/Max upstream rate:
ADSL: 32 Kbps to 800 Kbps
ADSL2: 32 Kbps to 800 Kbps
ADSL2+: 32 Kbps to 2 Mbps
Min/Max downstream rate:
ADSL: 224 Kbps to 8 Mbps
ADSL2: 224 Kbps to 12 Mbps
ADSL2+: 224 Kbps to 24 Mbps

Line Code: DMT

Physical characteristics

Dimensions: 4.65 (d) x 3.2 (w) x 1.3 (h) in. (11.81 x 8.13 x 3.3 cm)
Weight: 0.18 lb. (0.08 kg)

Environment

Operating temperature: 32°F to 122°F (0°C to 50°C)
Operating relative humidity: 0% to 95%, non-condensing
Non-operating/Storage temperature: -40°F to 185°F (-40°C to 85°C)
Non-operating/Storage relative humidity: 0% to 95%, non-condensing

Notes

ADSL2/ADSL2+ capability not available at first release, but can be updated through a future software release.



ProCurve Secure Router dl 2xE1 Module (J8456A)

2-port E1/FrE1 dl module with integrated CSU/DSU. Includes 2 RJ48-RJ48 Telco straight-through cables (5 m).

Connectivity

Connectors: (2xE1) RJ-48C, 1 RJ-45 for optional backup module
E1: 2.048 Mbps (30x64 kbps) for each E1 interface
FrE1: DS0 channelized (Nx56/64 kbps)
Line Code: HDB3, AMI
Framing: FAS with optional CRC-4
Receiver sensitivity: -30 dB

Physical characteristics

Dimensions: 4.65 (d) x 3.2 (w) x 1.3 (h) in. (11.81 x 8.13 x 3.3 cm)
Weight: 0.13 lb. (0.06 kg)

Environment

Operating temperature: 32°F to 122°F (0°C to 50°C)
Operating relative humidity: 0% to 95%, non-condensing
Non-operating/Storage temperature: -40°F to 185°F (-40°C to 85°C)
Non-operating/Storage relative humidity: 0% to 95%, non-condensing



ProCurve Secure Router dl 1xE1+G.703 Module (J8455A)

1-port E1/FrE1 dl module with integrated CSU/DSU and G.703 TDM interface to connect to a PBX for voice service. Includes 2 RJ48-RJ48 Telco straight-through cables (5 m).

Connectivity

Connectors: (E1) RJ-48C, (G.703) RJ-48C, 1 RJ-45 for optional backup module
E1: 2.048 Mbps (30x64 kbps)
FrE1: DS0 channelized (Nx56/64 kbps)
Line Code: HDB3, AMI
Framing: FAS with optional CRC-4
Receiver sensitivity: -30 dB

Physical characteristics

Dimensions: 4.65 (d) x 3.2 (w) x 1.3 (h) in. (11.81 x 8.13 x 3.3 cm)
Weight: 0.16 lb. (0.07 kg)

Environment

Operating temperature: 32°F to 122°F (0°C to 50°C)
Operating relative humidity: 0% to 95%, non-condensing
Non-operating/Storage temperature: -40°F to 185°F (-40°C to 85°C)
Non-operating/Storage relative humidity: 0% to 95%, non-condensing

ProCurve Secure Router 7000dl Series



ProCurve Secure Router dl 1xE1 Module (J8454A)

1-port E1/FrE1 dl module with integrated CSU/DSU. Includes 1 RJ48-RJ48 Telco straight-through cable (5 m).

Connectivity

Connectors: (E1) RJ-48C, 1 RJ-45 for optional backup module
E1: 2.048 Mbps (Nx64 kbps)
FrE1: DS0 channelized (Nx56/64 kbps)
Line Code: HDB3, AMI
Framing: FAS with optional CRC-4
Receiver sensitivity: -30 dB

Physical characteristics

Dimensions: 4.65 (d) x 3.2 (w) x 1.3 (h) in. (11.81 x 8.13 x 3.3 cm)
Weight: 0.13 lb. (0.06 kg)

Environment

Operating temperature: 32°F to 122°F (0°C to 50°C)
Operating relative humidity: 0% to 95%, non-condensing
Non-operating/Storage temperature: -40°F to 185°F (-40°C to 85°C)
Non-operating/Storage relative humidity: 0% to 95%, non-condensing



ProCurve Secure Router dl 2xT1 Module (J8453A)

2-port T1/FrT1 dl module with integrated CSU/DSU. Includes 2 RJ48-RJ48 Telco straight-through cables (5 m).

Connectivity

Connectors: (2xT1) RJ-48C, 1 RJ-45 for optional backup module
T1: 1.544 Mbps (24x64 kbps) for each T1 interface
FrT1: DS0 channelized (Nx64 kbps)
Line Code: AMI, B8ZS
Input signal: 0 to -36 (DS1)
Line build out: 0, -7.5, -15, -22.5 dB

Physical characteristics

Dimensions: 4.65 (d) x 3.2 (w) x 1.3 (h) in. (11.81 x 8.13 x 3.3 cm)
Weight: 0.13 lb. (0.06 kg)

Environment

Operating temperature: 32°F to 122°F (0°C to 50°C)
Operating relative humidity: 0% to 95%, non-condensing
Non-operating/Storage temperature: -40°F to 185°F (-40°C to 85°C)
Non-operating/Storage relative humidity: 0% to 95%, non-condensing



ProCurve Secure Router dl 1xT1 + DSX-1 Module (J8452A)

1-port T1 dl module with integrated CSU/DSU and DSX-1 TDM interface to connect to a PBX for voice service. Includes 2 RJ48-RJ48 Telco straight-through cables (5 m).

Connectivity

Connectors: (T1) RJ-48C, (DSX-1) RJ-48C, 1 RJ-45 for optional backup module
T1: 1.544 Mbps (24x64 kbps)
FrT1: DS0 (Nx64 kbps); programmable DS0 assignment to allow DSX-1 TDM drop off to PBX
Line Code: AMI, B8ZS
Input signal: 0 to -36 (DS1)
Line build out: 0, -7.5, -15, -22.5 dB

Physical characteristics

Dimensions: 4.65 (d) x 3.2 (w) x 1.3 (h) in. (11.81 x 8.13 x 3.3 cm)
Weight: 0.13 lb. (0.06 kg)

Environment

Operating temperature: 32°F to 122°F (0°C to 50°C)
Operating relative humidity: 0% to 95%, non-condensing
Non-operating/Storage temperature: -40°F to 185°F (-40°C to 85°C)
Non-operating/Storage relative humidity: 0% to 95%, non-condensing

ProCurve Secure Router 7000dl Series



ProCurve Secure Router dl 1xT1 Module (J8451A)

1-port T1/FrT1 dl module with integrated CSU/DSU. Includes 1 RJ48-RJ48 Telco straight-through cable (5 m).

Connectivity

Connectors: (T1) RJ-48C, 1 RJ-45 for optional backup module
T1: 1.544 Mbps (24x64 kbps) for each T1 interface
FrT1: DS0 channelized (Nx64 kbps)
Line Code: AMI, B8ZS
Input signal: 0 to -36 (DS1)
Line build out: 0, -7.5, -15, -22.5 dB

Physical characteristics

Dimensions: 4.65 (d) x 3.2 (w) x 1.3 (h) in. (11.81 x 8.13 x 3.3 cm)
Weight: 0.13 lb. (0.06 kg)

Environment

Operating temperature: 32°F to 122°F (0°C to 50°C)
Operating relative humidity: 0% to 95%, non-condensing
Non-operating/Storage temperature: -40°F to 185°F (-40°C to 85°C)
Non-operating/Storage relative humidity: 0% to 95%, non-condensing

dl Wide Modules

ProCurve Secure Router dl Wide 8xSerial Module (J9011A)

8-port serial dl wide module supporting up to 2 Mbps per port over V.35/X.21 interfaces to an external CSU/DSU

Connectivity

Connectors: (Serial) 26-pin interface
Rate: Up to 10 Mbps per port to an external CSU/DSU
Interface: V.35 or X.21 interface support

Physical characteristics

Dimensions: 8.75 (d) x 6.000 (w) x 1.000 (h) in. (22.23 x 15.24 x 2.54 cm)
Weight: 0.54 lb. (0.24 kg)

Environment

Operating temperature: 32°F to 122°F (0°C to 50°C)
Operating relative humidity: 0% to 95%, non-condensing
Non-operating/Storage temperature: -40°F to 185°F (-40°C to 85°C)
Non-operating/Storage relative humidity: 0% to 95%, non-condensing

Notes

Module requires the number of V.35 or X.21 serial cables needed to connect and use at the customer premises with an external CSU/DSU.
Serial interfaces operate in DTE mode only. There is no internal clock.



ProCurve Secure Router dl Wide 8xT1/E1 Module (J8463A)

8-port T1/FrT1/E1/FrE1 dl wide module can support either T1 or E1 functionality via onboard dipswitch setting. Includes 8 RJ48-RJ48 Telco straight-through cables (5 m).

Connectivity

Connectors: (8xT1/E1) RJ-48C
T1: 1.544 Mbps (24x64 kbps) for each T1
E1: 2.048 Mbps (30x64 kbps) for each E1
FrT1/E1: DS0 channelized (Nx64 kbps) T1 line code: AMI/B8ZS E1 line code: HDB3

Physical characteristics

Dimensions: 6.0 (d) x 8.64 (w) x 0.94 (h) in. (15.24 x 21.95 x 2.39 cm)
Weight: 2.93 lb. (1.32 kg)

Environment

Operating temperature: 32°F to 122°F (0°C to 50°C)
Operating relative humidity: 0% to 95%, non-condensing
Non-operating/Storage temperature: -40°F to 185°F (-40°C to 85°C)
Non-operating/Storage relative humidity: 0% to 95%, non-condensing

ProCurve Secure Router 7000dl Series

Cables

ProCurve Secure Router Serial Cable X.21 DTE (J8755A)

X.21 DTE serial cable to be used with ProCurve Secure Router Serial dl Module to connect to external CSU/DSU

Connectivity

Connectors: 26-pin interface to dl serial module, X.21 DTE interface to external CSU/DSU

Cable length: 6.56 ft.(2 m)

ProCurve Secure Router Serial Cable V.35 DTE (J8757A)

V.35 DTE serial cable to be used with ProCurve Secure Router Serial dl Module to connect to external CSU/DSU

Connectivity

Connectors: 26-pin interface to dl serial module, V.35 DTE interface to external CSU/DSU

Cable length: 6.56 ft.(2 m)

dl Backup Modules

ProCurve Secure Router dl 1-port ISDN BRI U Backup Module (J8460A)

1-port ISDN BRI U module attaches as a daughter card to dl modules to provide backup capability. Includes 1 RJ11-RJ45 straight-through cable (3 m).

Connectivity

Connectors: RJ-45
Interface: U interface support; support for 1 B channel (64 kbps)

Physical characteristics

Dimensions: 3.75 (d) x 2.5 (w) x 0.73 (h) in. (9.53 x 6.35 x 1.85 cm)

Weight: 0.4 lb. (0.18 kg)

Environment

Operating temperature: 32°F to 122°F (0°C to 50°C)
Operating relative humidity: 0% to 95%, non-condensing
Non-operating/Storage temperature: -40°F to 185°F (-40°C to 85°C)
Non-operating/Storage relative humidity: 0% to 95%, non-condensing

ProCurve Secure Router dl 1-port ISDN BRI S/T Backup Module (J8461A)

1-port ISDN BRI S/T module attaches as a daughter card to dl modules to provide backup capability. Includes 1 RJ11-RJ45 straight-through cable (3 m).

Connectivity

Connectors: RJ-45
Interface: S/T interface support; support for 1 B channel (64 kbps)

Physical characteristics

Dimensions: 3.75 (d) x 2.5 (w) x 0.73 (h) in. (9.53 x 6.35 x 1.85 cm)

Weight: 0.4 lb. (0.18 kg)

Environment

Operating temperature: 32°F to 122°F (0°C to 50°C)
Operating relative humidity: 0% to 95%, non-condensing
Non-operating/Storage temperature: -40°F to 185°F (-40°C to 85°C)
Non-operating/Storage relative humidity: 0% to 95%, non-condensing

ProCurve Secure Router 7000dl Series

ProCurve Secure Router dl Analog Modem Backup Module (J8462A)

1-port v.90 analog modem attaches as a daughter card to dl modules to provide backup capability. Users can also initiate an out-of-band console session through the modem interface.

Supports speeds from 300 bps to 33.6 kbps.

Physical characteristics

Dimensions: 3.75 (d) x 2.5 (w) x 0.73 (h) in. (9.53 x 6.35 x 1.85 cm)

Weight: 0.36 lb. (0.16 kg)

Environment

Operating temperature: 32°F to 122°F (0°C to 50°C)

Operating relative humidity: 0% to 95%, non-condensing

Non-operating/Storage temperature: -40°F to 185°F (-40°C to 85°C)

Non-operating/Storage relative humidity: 0% to 95%, non-condensing

VPN Encryption Modules

ProCurve Secure Router 7100/7200 IPSec VPN Base Module (J9026A)

ProCurve Secure Router 7100/7200 IPSec VPN Base encryption module for 7100dl & 7200dl series routers enables IPSec capabilities in software and allows the termination of up to 10 VPN tunnels.

Physical characteristics

Dimensions: 3.12 (d) x 3.1 (w) x 1.26 (h) in. (7.92 x 7.87 x 3.2 cm)

Weight: 0.27 lb. (0.12 kg)

Environment

Operating temperature: 32°F to 122°F (0°C to 50°C)

Operating relative humidity: 0% to 95%, non-condensing

Non-operating/Storage temperature: -40°F to 185°F (-40°C to 85°C)

Non-operating/Storage relative humidity: 0% to 95%, non-condensing

Notes

Includes a free 10-user ProCurve VPN client license by registering on www.my.procurve.com

ProCurve Secure Router 7100/7200 IPSec VPN Module (J8471A)

IPSec VPN encryption module for 7100dl/7200dl series routers enables VPN capability

Terminates IPSec VPN site-to-site and client sessions Encryption: DES, 3DES, AES

Physical characteristics

Dimensions: 3.12 (d) x 3.1 (w) x 1.26 (h) in. (7.92 x 7.87 x 3.2 cm)

Weight: 0.27 lb. (0.12 kg)

Environment

Operating temperature: 32°F to 122°F (0°C to 50°C)

Operating relative humidity: 0% to 95%, non-condensing

Non-operating/Storage temperature: -40°F to 185°F (-40°C to 85°C)

Non-operating/Storage relative humidity: 0% to 95%, non-condensing

Notes

Includes a free 10-user ProCurve VPN client license by registering on www.my.procurve.com

© 2006 Hewlett-Packard Development Company, L.P. The information contained herein is subject to change without notice. The only warranties for HP products and services are set forth in the express warranty statements accompanying such products and services. Nothing herein should be construed as constituting an additional warranty. HP shall not be liable for technical or editorial errors or omissions contained herein.

06/16/06

To learn more, visit www.procurve.com
Information is subject to change without notice

