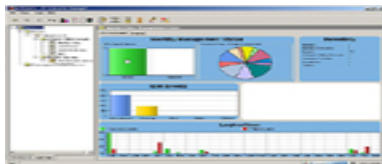


ProCurve Identity Driven Manager 2.2

ProCurve Identity Driven Manager, a plug-in to ProCurve Manager Plus, dynamically configures security and performance settings based on user, device, location, time, and client system state. IDM provides network administrators with the ability to centrally define and apply policy-based network access rights that allow the network to automatically adapt to the needs of users and devices as they connect, thereby enforcing network security while providing appropriate access to network users and devices. IDM is a powerful tool that allows network administrators to efficiently manage the users and devices connecting to their network.



ProCurve Identity Driven
Manager 2.2 base
product--500-user license
(J9012A)

ProCurve Identity Driven Manager 2.2

Features and benefits

Additional information

• Integration:

- **Dynamic and automatic synchronization of managed users from the authentication database:**

Identity Driven Manager provides administrators with the ability to synchronize users from Active Directory.

- **Mapping of groups from the authentication database:**

When synchronizing Identity Driven Manager from the authentication database, Identity Driven Manager will map the user's group to an access policy group (APG) with the appropriate policies.

- **Import users from an XML file:** If current user data is not kept in an LDAP-compatible data store, Identity Driven Manager can read users and group membership from an XML-formatted file.

- **Works with industry-standard RADIUS protocol:**

Access policies are set based on RADIUS authentication, so customers have a choice of authentication database and a reliable, time-tested technology for authentication.

• Security:

- **Dynamic access rules based on time, location, and user system are formed by administrators and dynamically applied:**

Access-policy communities have rules that are applied to each user in the community based on the time, location, and user system. These dynamic inputs are evaluated and the policies applied according to the user's profile, so the appropriate access policies are applied at the right time and place.

- **Automatic VLAN assignment:** Users are automatically assigned to the appropriate VLAN based on their identity, community, location, and time of day.

- **Integrity state checking:** Identity Driven Manager will receive an indicator of the client's state of health from the client system's security agents (third parties). These third-party clients will perform integrity checking and report it to Identity Driven Manager in the standard RADIUS data stream.

- **User-based access control lists (ACLs):** Users can be allowed or denied access to network

resources (i.e., servers, printers) based on the destination IP address or a range of IP addresses, and/or to network services (i.e., Web pages, instant messaging, or FTP) based on well-known or user-defined TCP/UDP ports.

• Performance:

- **Traffic prioritization:** Traffic prioritization (QoS) is automatically set for the user based on identity, community, location, and time of day.

- **Rate limits:** Rate limits are automatically applied to user traffic based on identity, community, location, and time of day.

• Ease of use:

- **Auto-discovery of identity objects:** RADIUS servers with IDM agents, RADIUS realms, and users are automatically discovered at login and assigned to a default policy group for the administrator's attention.

- **Grouping of users into access-policy communities:**

Identity Driven Manager allows administrators to group users into access-policy communities to apply policies.

• Resiliency and high availability:

- **The Identity Driven Manager agent can run independently and be deployed to redundant RADIUS servers:**

The Identity Driven Manager agent can be deployed to each RADIUS server in the network. The agents are able to operate independently from the Identity Driven Manager server, allowing Identity Driven Manager to be deployed to multiple redundant RADIUS servers providing authentication services for network devices.

- **Identity Driven Manager updates the server with transactional resilience:**

The Identity Driven Manager agent uses a transaction process to update Identity Driven Manager server data. If the connection from the agent on the RADIUS server to the Identity Driven Manager server is broken, the agent will queue the data until the connection is restored and then transmit the data, as appropriate, back to the Identity Driven Manager database.

ProCurve Identity Driven Manager 2.2

- **Device support:**

- **ProCurve intelligent edge switches:** 5400zl series, 5300xl series, 3500yl series, 3400cl series

- **ProCurve traditional edge switches:** 6108, 4200vl series, 2800 series, 2600 and 2600-PWR series, 2500 series

- **ProCurve wireless access points:** 530 AP, 420 AP

- **ProCurve wireless edge services:** Wireless Edge Services zl and xl modules

- **ProCurve Secure Access:** Access Control Server 745wl, Switch xl Access Controller Module

- **Industry-leading warranty**

- 90-day media warranty, lifetime phone support

ProCurve Identity Driven Manager 2.2



ProCurve Identity Driven Manager 2.2 base product--500-user license (J9012A)

ProCurve Identity Driven Manager 2.2--add 2000 users license (J9014A)

ProCurve Identity Driven Manager 2.2 base product (upgrade from v1.0) (J9013A)

Specifications

	Please see ProCurve Manager Plus for system requirements.	Please see ProCurve Manager Plus for system requirements.	Please see ProCurve Manager Plus for system requirements.
Minimum system hardware		2 MB storage	2 MB storage
Required platforms		ProCurve Manager Plus version 2.1	ProCurve Manager Plus version 2.1
Supported platforms	OpenView NNM integration		- Users
RADIUS server support	Free RADIUS Funk Steelbelted RADIUS Server Microsoft IAS	Free RADIUS Funk Steelbelted RADIUS Server Microsoft IAS	FreeRADIUS (on Red Hat ES3 or ES4 or SuSe Linux 9) Funk Steelbelted RADIUS Server Microsoft IAS
Features	Intuitive Explorer-style interface OpenView NNM integration Application of policies by user identity - Auto VLAN assignment - Auto set quality of service by user - Auto set bandwidth assignment by user Rule-based access rights deployment Dynamic rights assignment based on: - Time - Location - User system Auto-discovery of: - RADIUS servers - Realms - Users	Intuitive Explorer-style interface OpenView NNM integration Application of policies by user identity - Auto VLAN assignment - Auto set quality of service by user - Auto set bandwidth assignment by user Rule-based access rights deployment Dynamic rights assignment based on: - Time - Location - User system Auto-discovery of: - RADIUS servers - Realms - Users	Intuitive Explorer-style interface OpenView NNM integration Application of policies by user identity - Auto VLAN assignment - Auto set quality of service by user - Auto set bandwidth assignment by user Rule-based access rights deployment Dynamic rights assignment based on: - Time - Location - User system Auto-discovery of: - RADIUS servers - Realms - Users
Notes	The base product for Identity Driven Manager allows for managing up to 500 users. Customers may add users in quantities of 2000 by purchasing J9014A.	Pricing has not been confirmed, but it will likely have this structure, allowing customers to buy additional units of 2000 users at a time.	This upgrade provides Identity Driven Manager 2.0, which allows for managing up to 500 users. Customers may add users in quantities of 2000 by purchasing J9014A.

ProCurve Identity Driven Manager 2.2

Accessories

NEW ProCurve Manager Plus v2.2 upgrade from PCM+ 1.6 or newer (J9056A)

ProCurve Manager Plus 2.2 50-device upgrade adds new PCM+ 2.2 functionality to previously purchased PCM+ 1.6 or PCM+ 1.5 releases.

System requirements

For networks having 50 to 250 managed devices, ProCurve recommends the following:

Minimum system hardware

2.0 GHz Intel Pentium 4 or equivalent processor
2 GB RAM memory
10 GB storage
1000 MB NIC

for PCM+ as a standalone application, assuming a dedicated server

Recommended system hardware

3.0 GHz Intel Pentium 4 or equivalent processor
3 GB RAM memory
40 GB storage
1000 MB NIC

for PCM+ assuming a dedicated server, and including ProCurve Identity Driven Manager, Mobility Manager, and Network Immunity Manager on the same server

Recommended software

Microsoft Windows 2000 Server, Advanced Server or Professional with SP4 or better
Microsoft Windows 2003 Server
Windows XP SP2
Windows XP Professional SP2

For networks having 250 to 2,000 managed devices, ProCurve recommends the following:

Minimum system hardware

3.0 GHz Intel Pentium 4 or equivalent processor
3 GB RAM memory
40 GB storage
1000 MB NIC

for PCM+ as a standalone application, assuming a dedicated server

Recommended system hardware

Intel Xeon or equivalent processor

4 GB RAM memory

80 GB storage

1000 MB NIC

for PCM+ assuming a dedicated server, and including ProCurve Identity Driven Manager, Mobility Manager, and Network Immunity Manager on the same server

Recommended software

Microsoft Windows 2000 Server, Advanced Server or Professional with SP4 or better

Microsoft Windows 2003 Server

Windows XP SP2

Windows XP Professional SP2

Browsers

Microsoft Internet Explorer version 5.0 or later

Supported platforms

HP OpenView Network Node Manager version 6.41 or 7.01 or 7.5

Additional requirements

NOTE: ProCurve Network Immunity Manager when loaded on PCM+ 2.2 can sample up to 500 managed ports using sFlow or XRMON.

Notes

Additional processing power may be necessary for extensive traffic monitoring.

Unlimited license means that ProCurve does not impose a limit on the number of devices attached to the network as a condition of the license.

Some degradation in performance may be expected the greater the number of devices attached to the network.

Specifications subject to change

ProCurve Identity Driven Manager 2.2

NEW ProCurve Manager Plus v2.2 50-device license (J9057A)

PCM+ provides a starter license for advanced device management of up to 50 ProCurve devices, including integration with the HP OpenView Network Node Manager product.

System requirements

For networks having 50 to 250 managed devices, ProCurve recommends the following:

Minimum system hardware

2.0 GHz Intel Pentium 4 or equivalent processor
2 GB RAM memory
10 GB storage
1000 MB NIC

for PCM+ as a standalone application, assuming a dedicated server

Recommended system hardware

3.0 GHz Intel Pentium 4 or equivalent processor
3 GB RAM memory
40 GB storage
1000 MB NIC

for PCM+ assuming a dedicated server, and including ProCurve Identity Driven Manager, Mobility Manager, and Network Immunity Manager on the same server

Recommended software

Microsoft Windows 2000 Server, Advanced Server or Professional with SP4 or better
Microsoft Windows 2003 Server
Windows XP SP2
Windows XP Professional SP2

For networks having 250 to 2,000 managed devices, ProCurve recommends the following:

Minimum system hardware

3.0 GHz Intel Pentium 4 or equivalent processor
3 GB RAM memory
40 GB storage
1000 MB NIC

for PCM+ as a standalone application, assuming a dedicated server

Recommended system hardware

Intel Xeon or equivalent processor

processor
4 GB RAM memory
80 GB storage
1000 MB NIC

for PCM+ assuming a dedicated server, and including ProCurve Identity Driven Manager, Mobility Manager, and Network Immunity Manager on the same server

Recommended software

Microsoft Windows 2000 Server, Advanced Server or Professional with SP4 or better
Microsoft Windows 2003 Server
Windows XP SP2
Windows XP Professional SP2

Browsers

Microsoft Internet Explorer version 5.0 or later

Supported platforms

HP OpenView Network Node Manager version 6.41 or 7.01 or 7.5

Additional requirements

NOTE: ProCurve Network Immunity Manager when loaded on PCM+ 2.2 can sample up to 500 managed ports using sFlow or XRMON.

Notes

Additional processing power may be necessary for extensive traffic monitoring.

Unlimited license means that ProCurve does not impose a limit on the number of devices attached to the network as a condition of the license.

Some degradation in performance may be expected the greater the number of devices attached to the network.

Specifications subject to change

ProCurve Identity Driven Manager 2.2

NEW ProCurve Manager Plus v2.2 upgrade +100-device license (J9058A)

PCM+ 2.2 +100-device license gives the customer an additional 100-device license for companies with growing managed device counts.

System requirements

For networks having 50 to 250 managed devices, ProCurve recommends the following:

Minimum system hardware

2.0 GHz Intel Pentium 4 or equivalent processor
2 GB RAM memory
10 GB storage
1000 MB NIC

for PCM+ as a standalone application, assuming a dedicated server

Recommended system hardware

3.0 GHz Intel Pentium 4 or equivalent processor
3 GB RAM memory
40 GB storage
1000 MB NIC

for PCM+ assuming a dedicated server, and including ProCurve Identity Driven Manager, Mobility Manager, and Network Immunity Manager on the same server

Recommended software

Microsoft Windows 2000 Server, Advanced Server or Professional with SP4 or better
Microsoft Windows 2003 Server
Windows XP SP2
Windows XP Professional SP2

For networks having 250 to 2,000 managed devices, ProCurve recommends the following:

Minimum system hardware

3.0 GHz Intel Pentium 4 or equivalent processor
3 GB RAM memory
40 GB storage
1000 MB NIC

for PCM+ as a standalone application, assuming a dedicated server

Recommended system hardware

Intel Xeon or equivalent processor

4 GB RAM memory
80 GB storage
1000 MB NIC

for PCM+ assuming a dedicated server, and including ProCurve Identity Driven Manager, Mobility Manager, and Network Immunity Manager on the same server

Recommended software

Microsoft Windows 2000 Server, Advanced Server or Professional with SP4 or better
Microsoft Windows 2003 Server
Windows XP SP2
Windows XP Professional SP2

Browsers

Microsoft Internet Explorer version 5.0 or later

Supported platforms

HP OpenView Network Node Manager version 6.41 or 7.01 or 7.5

Additional requirements

NOTE: ProCurve Network Immunity Manager when loaded on PCM+ 2.2 can sample up to 500 managed ports using sFlow or XRMON.

Notes

Additional processing power may be necessary for extensive traffic monitoring.

Unlimited license means that ProCurve does not impose a limit on the number of devices attached to the network as a condition of the license.

Some degradation in performance may be expected the greater the number of devices attached to the network.

Specifications subject to change

NEW ProCurve Manager Plus v2.2 unlimited-device license (J9059A)

PCM+ 2.2 unlimited license provides a PCM+ license that does not limit the number of devices managed (it does NOT require the 50-device license).

System requirements

For networks having 50 to 250 managed devices, ProCurve recommends the following:

Minimum system hardware

2.0 GHz Intel Pentium 4 or equivalent processor
2 GB RAM memory
10 GB storage
1000 MB NIC

for PCM+ as a standalone application, assuming a dedicated server

Recommended system hardware

3.0 GHz Intel Pentium 4 or equivalent processor
3 GB RAM memory
40 GB storage
1000 MB NIC

for PCM+ assuming a dedicated server, and including ProCurve Identity Driven Manager, Mobility Manager, and Network Immunity Manager on the same server

Recommended software

Microsoft Windows 2000 Server, Advanced Server or Professional with SP4 or better
Microsoft Windows 2003 Server
Windows XP SP2
Windows XP Professional SP2

For networks having 250 to 2,000 managed devices, ProCurve recommends the following:

Minimum system hardware

3.0 GHz Intel Pentium 4 or equivalent processor
3 GB RAM memory
40 GB storage
1000 MB NIC

for PCM+ as a standalone application, assuming a dedicated server

Recommended system hardware

Intel Xeon or equivalent processor

processor
4 GB RAM memory
80 GB storage
1000 MB NIC

for PCM+ assuming a dedicated server, and including ProCurve Identity Driven Manager, Mobility Manager, and Network Immunity Manager on the same server

Recommended software

Microsoft Windows 2000 Server, Advanced Server or Professional with SP4 or better
Microsoft Windows 2003 Server
Windows XP SP2
Windows XP Professional SP2

Browsers

Microsoft Internet Explorer version 5.0 or later

Supported platforms

HP OpenView Network Node Manager version 6.41 or 7.01 or 7.5

Additional requirements

NOTE: ProCurve Network Immunity Manager when loaded on PCM+ 2.2 can sample up to 500 managed ports using sFlow or XRMON.

Notes

Additional processing power may be necessary for extensive traffic monitoring.

Unlimited license means that ProCurve does not impose a limit on the number of devices attached to the network as a condition of the license.

Some degradation in performance may be expected the greater the number of devices attached to the network.

Specifications subject to change